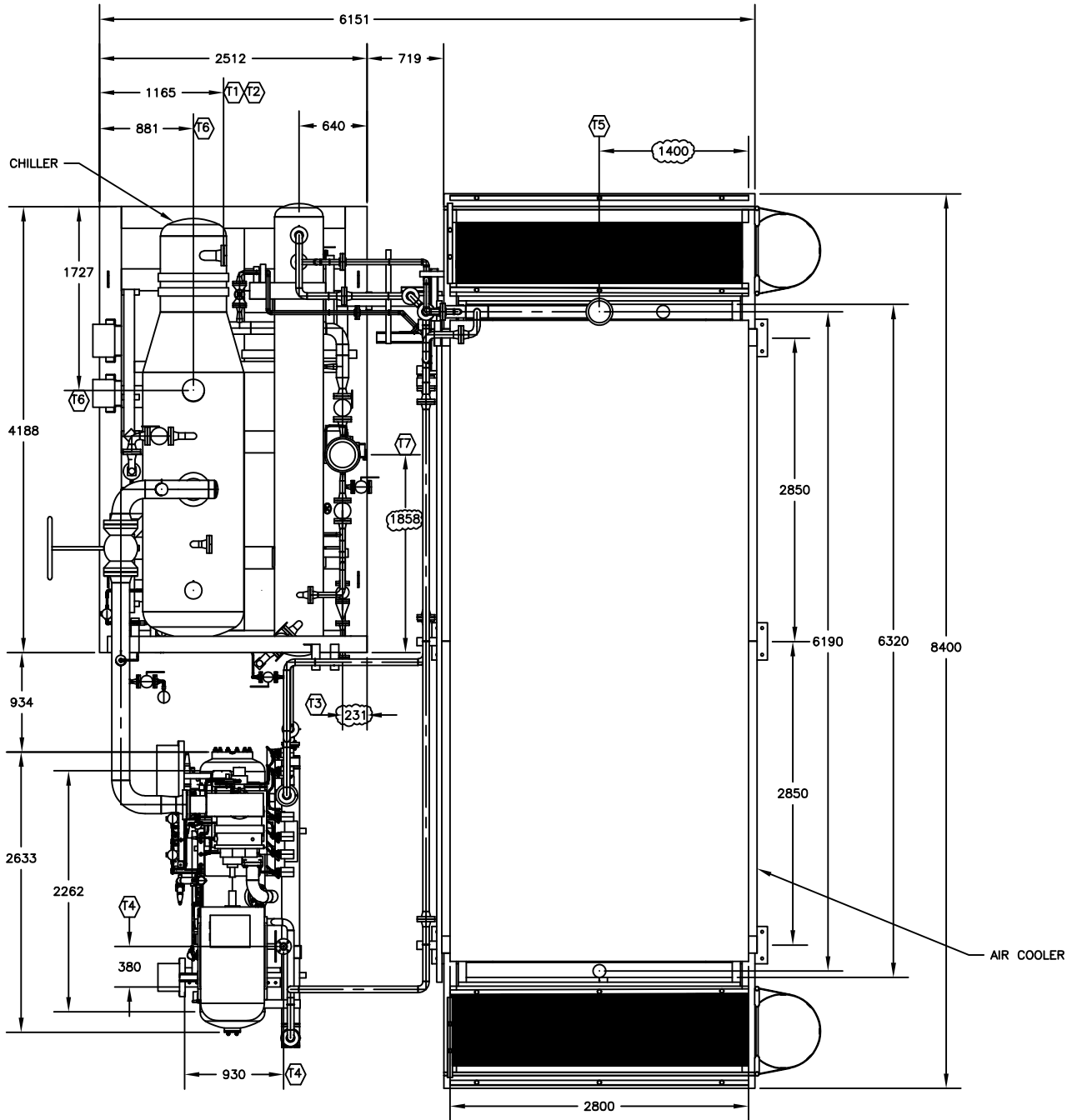
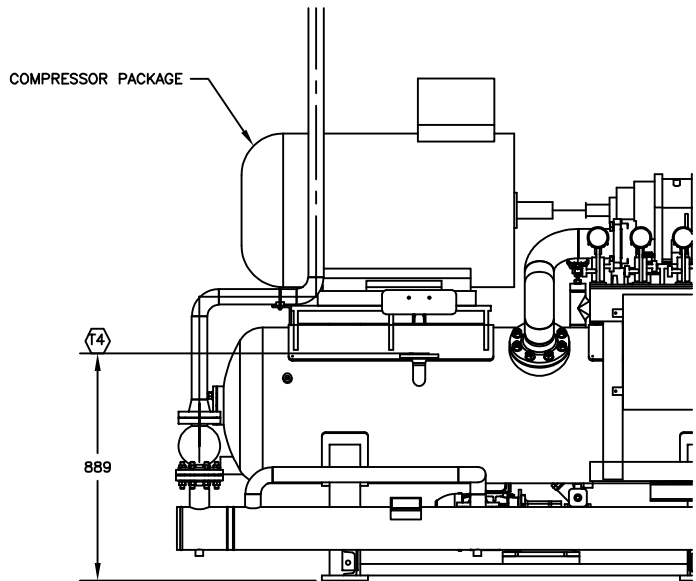
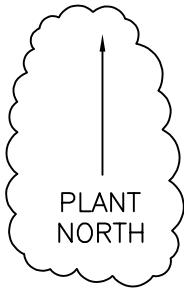


CONNECTION LIST			
NO.	LOCATION	DESCRIPTION	SIZE
T-1	VESSEL SKID	CHILLER INLET	3"—150 ANSI RF
T-2	VESSEL SKID	CHILLER OUTLET	3"—150 ANSI RF
T-3	VESSEL SKID	FILTER DRYER INLET	1"—300 ANSI RF
T-4	COMPRESSOR SKID	OIL SEPARATOR PSV	1 1/2"—300 ANSI RF
T-5	VESSEL SKID	CONDENSER PSV	3"—300 ANSI RF
T-6	VESSEL SKID	CHILLER PSV	3"—300 ANSI RF
T-7	VESSEL SKID	INSTRUMENT AIR SUPPLY	1/2"—150 ANSI RF

WEIGHT	
CONDENSER	5600 KG
VESSEL SKID	7000 KG
COMPRESSOR SKID	3500 KG

- NOTES:
- ALL DIMENSIONS ARE IN MM.
  - FOR SKID INSTALLATION, REFER TO INSTRUCTION AND OPERATIONAL MANUAL.
  - ANCHOR HOLES TOLERANCES  $\pm 0.13$  in ( $\pm 3.2$  mm).
  - CUSTOMER CONNECTION TOLERANCES:  $\pm 1.00$  in ( $\pm 25.4$  mm).
  - FLANGES ARE PER ANSI STD PER ASME B16.5.
  - NON-SKID GRATING UNDER MAINTENANCE AREA IS NOT INCLUDED.
  - PERSONAL PROTECTION, HEAT AND COLD CONSERVATION HEAT TRACING IS BY OTHER.



5	F	31.10.24	FOR APPROVAL	AJD	AJD	IES	SES
4	F	16.09.24	FOR APPROVAL	AJD	AJD	IES	SES
3	F	22.08.24	FOR APPROVAL	AJD	AJD	IES	SES
2	F	22.07.24	FOR APPROVAL	AJD	AJD	IES	SES
1	F	19.07.24	FOR APPROVAL	AJD	AJD	IES	SES
0	F	05.04.24	FOR APPROVAL	AJD	AJD	IES	SES

REV.	STATUS	DATE	PURPOSE OF ISSUE	PREP.	CHKD.	APPD.	AUTH.
------	--------	------	------------------	-------	-------	-------	-------

CLIENT: SERVICE: LOCATION: UNIT TAG NO.:		
---	--	--

VENDOR LOGO	
-------------	--

Contract No.	P.O. No.	SCALE
--------------	----------	-------

DRAWING TITLE:  
GENERAL ARRANGEMENT DRAWING

DRAWING NO.	REV.	SHEET No.	SIZE
	5	1 OF 10	D